



# Extending Expression Web with Add-Ons

**A**ny good web editor must be extensible, because the Web is constantly changing. This capability is one of the strongest assets of Expression Web; it means that third parties can add new features that are easy to use inside of Expression Web. You don't have to wait for Microsoft to release a new version to get more features.

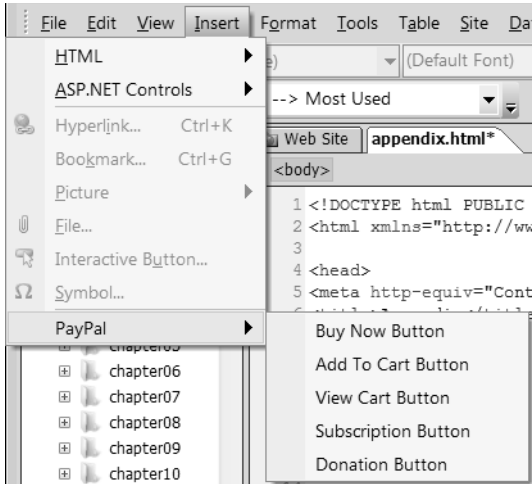
I am talking not about code snippets, like the one we created in Chapter 2, but about features that make it easy to add e-commerce capabilities using PayPal buttons or a shopping cart, improve your search engine ranking using Google Sitemaps, or add Flash banners and interactivity without becoming a programmer or a search engine specialist.

Some of these add-ons are commercial applications that charge a fee, and others are created by someone who sees a need and creates a free add-on. At the time of this writing, there were over a dozen add-ons available for download and more actively under development. A current list is available at <http://foundationsofexpressionweb.com/exercises/appendix>.

Add-ons are usually easy to install and use. Once you have found an extension for Expression Web that offers you the ability to extend what you can do, download the add-on, and follow the extension maker's instructions on how to install it. Most add-ons will have an installer that creates either a toolbar or an entry in one of the menus.

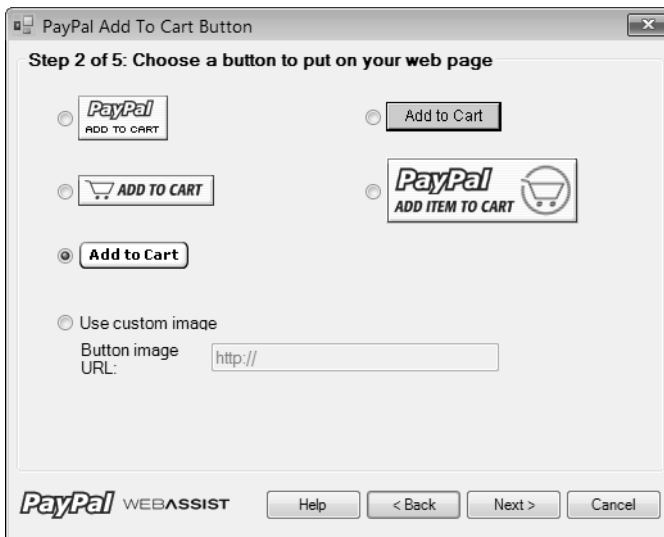
## Adding PayPal Buttons

The first add-on I will show you creates a menu item. A free add-on from WEBASSIST creates PayPal buttons to allow people to purchase items, subscriptions, or donate via PayPal. Once you have downloaded and installed this add-on, an entry for PayPal will appear on the Insert menu, as shown in Figure A-1.



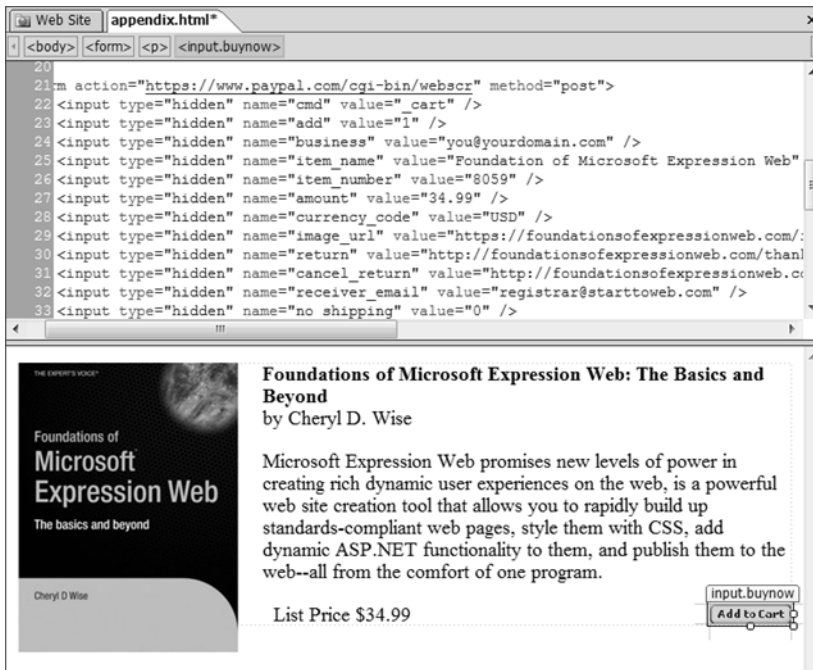
**Figure A-1.** Some add-ons become part of the Expression Web menus.

Once the add-on has been launched from the menu, a series of dialog boxes will walk you through the steps of connecting the buttons you create to a shopping cart and your PayPal account. Provide the requested information at each prompt to create and process the order, as shown in Figure A-2.



**Figure A-2.** To use this add-on, you simply follow the prompts.

When you have filled in all the information, the add-on will create all the code necessary for your site visitor to purchase the item via PayPal, as shown in Figure A-3.

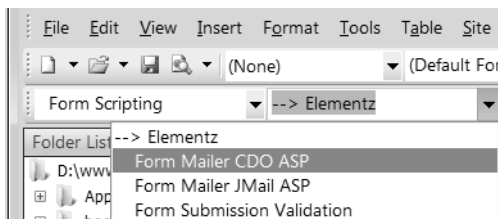


**Figure A-3.** All the form fields were created with the values you provided in the dialog boxes.

As you can see, it is much easier to create a shopping cart button using an add-on than it is to create each of the hidden form fields one at a time.

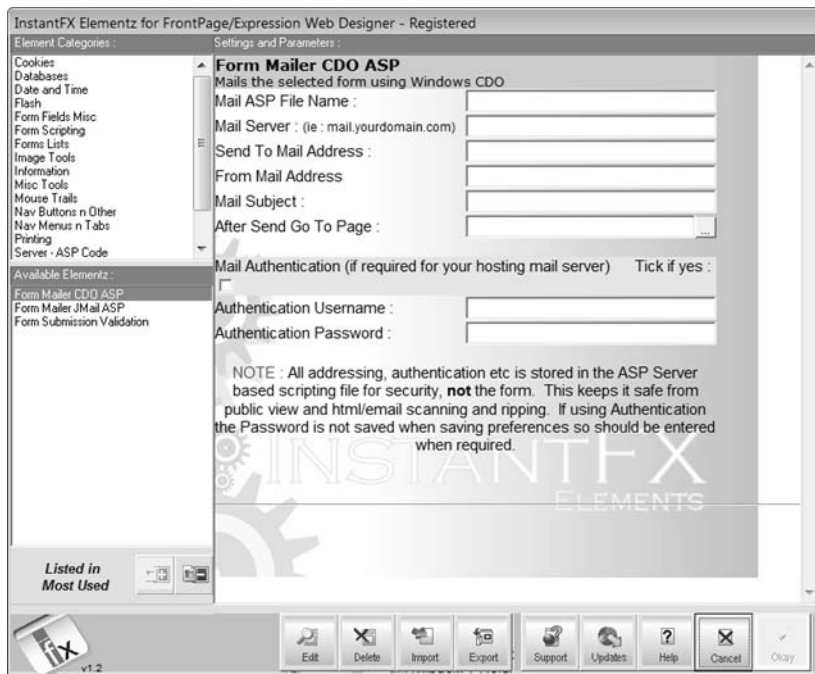
## Adding Form Tools

The next add-on I will show you is Elementz from Instantfx.net; it adds a new toolbar, as shown in A-4, and offers more form tools such as forms processing, form validation, and the ability to create different types of menus.



**Figure A-4.** Forms add-ons for processing by e-mail and for form validation

As with the PayPal add-on, a dialog box is launched that allows you to fill in a form to create your server-side processing script, as shown in Figure A-5.



**Figure A-5.** Fill in the form, and your server-side e-mail script is created by the add-on.

Add-ons such as these, which extend the functionality of Expression Web, mean that you can increase your productivity and add features to your website without needing to use external programs such as Flash.

## Keyboard Shortcuts

Sometimes using a keyboard shortcut rather than your mouse to interact with Expression Web is easier and faster. The standard Windows application shortcuts for copy, cut, paste, and undo work in Expression Web, as they do any other Microsoft program. In this section of the appendix, we'll discuss keyboard shortcuts that are specific to Expression Web or may behave somewhat differently than you expect.

F5 is an example of a keyboard shortcut that may not work as you expect. This is the standard Windows shortcut to refresh the view. In Expression Web, the behavior changes depending on whether your cursor is in the folder list, where it will refresh the list and display files that were added, or in the document window with a web page open. If you use F5 in the document window while also in Design view, the page will revert to the last saved version. If you refresh in Code view, Design view will update to reflect the changes you made to the code. Simply clicking in the Design pane of Split view will do the same thing. Tables A-1 to A-5 show a number of useful Expression Web shortcuts.

**Table A-1.** *Common Windows Standard Shortcuts*

<b>Action</b>	<b>Shortcut</b>
Quit Expression Web.	Alt+F4
Cancel an action.	Esc
Undo an action.	Ctrl+Z or Alt+Backspace
Redo or repeat an action.	Ctrl+Y or Shift+Alt+Backspace
Toggle between open dialog boxes.	Alt+F6
Toggle between open dialog boxes in reverse order.	Alt+Shift+F6
Find text or code.	Ctrl+F
Find the next occurrence of the most recent search.	F3
Find the previous occurrence of the most recent search.	Shift+F3
Find the next occurrence of the current selection.	Ctrl+F3
Find the previous occurrence of the current selection.	Ctrl+Shift+F3
Replace text or code.	Ctrl+H
Check the spelling.	F7

**Table A-2.** *Interface and New Page Management*

<b>Action</b>	<b>Shortcut</b>
Create a new web page.	Ctrl+N
Open a web page.	Ctrl+O
Close a web page.	Ctrl+F4
Save a web page.	Ctrl+S
Print a web page.	Ctrl+P
Switch between open web pages.	Ctrl+Tab
Switch between open web pages in reverse order.	Ctrl+Shift+Tab
Preview a web page in a web browser.	F12 or Ctrl+Shift+B
Delete a web page or folder in the Folder List task pane or any dialog box.	Delete
Show or hide the Folder List task pane.	Alt+F1
Rename the currently selected file in the Folder List task pane.	F2
Move between Code, Design, and Split views.	Ctrl+Page Down or Ctrl+Page Up
Move between the Code and Design panes in Split view.	Alt+Page Down or Alt+Page Up
Create a hyperlink on a web page.	Ctrl+K
With a graphic selected, create an automatic thumbnail.	Ctrl+T

**Table A-3.** *Format Shortcuts*

<b>Action</b>	<b>Shortcut</b>
Apply bold formatting.	Ctrl+B
Apply an underline.	Ctrl+U
Apply italic formatting.	Ctrl+I
Apply superscript formatting.	Ctrl+plus sign (+)
Apply subscript formatting.	Ctrl+equals sign (=)
Copy text or graphics.	Ctrl+C or Ctrl+Insert
Cut selected text or graphics.	Ctrl+X or Shift+Delete
Paste text or graphics.	Ctrl+V or Shift+Insert
Copy the formatting.	Ctrl+Shift+C
Paste the formatting.	Ctrl+Shift+V
Remove manual formatting.	Ctrl+Shift+Z or Ctrl+spacebar
Center a paragraph.	Ctrl+E
Left-align a paragraph.	Ctrl+L
Right-align a paragraph.	Ctrl+R
Indent a paragraph from the left.	Ctrl+M
Indent a paragraph from the right.	Ctrl+Shift+M
Insert a line break.	Shift+Enter
Insert a nonbreaking space.	Ctrl+Shift+spacebar

**Table A-4.** *Working in Code View*

<b>Action</b>	<b>Shortcut</b>
Launch Quick tag editor.	Ctrl+Q
Insert a temporary bookmark.	Ctrl+F2
Move to the next temporary bookmark.	F2
Move to the previous temporary bookmark.	Shift+F2
Go to a line.	Ctrl+G
Insert a code snippet.	Ctrl+Enter
Insert an end tag.	Ctrl+period (.)
Insert a start tag.	Ctrl+comma (,)
Insert an HTML comment.	Ctrl+slash (/)
Complete a word.	Ctrl+spacebar
Select a tag and its contents.	Ctrl+Shift+colon (:)
Find a matching tag.	Ctrl+semicolon (;)
Perform an incremental search.	Ctrl+Alt+F

**Table A-5.** *Working with Tables*

<b>Action</b>	<b>Shortcut</b>
Insert a table.	Shift+Ctrl+Alt+T
Select the next table cell's content.	Tab
Select the preceding table cell's content.	Shift+Tab

# Index

## A

- absolute positioning
    - creating a two-column layout with, 174
    - layout problems caused by, 183
  - Access, 12
  - accessibility
    - Americans with Disabilities Act (ADA), 288
    - Cynthia Says, 290
    - Disability Discrimination Act (UK), 288
    - Expression Web's accessibility checker, 288
    - Rehabilitation Act, Sections 508 and 504, 288
    - state requirements for, 288
    - W3C Web Content Accessibility Guidelines (WCAG), 288
  - Accessibility Properties dialog box, 211
  - Accessibility Report, 48
  - active state, 132
  - Add Choice dialog box, 260
  - Add Code Snippet dialog box, 76
  - additive color model, 128
  - Adobe PDF files, 97
  - <address> element, supplying contact information with, 96
  - Advanced Button control, 259
  - Advanced Form Properties dialog box, 272
  - Advanced tab, 81
  - align property, 139
  - alpha transparency, 210
  - Americans with Disabilities Act (ADA), 288
  - anchor (bookmark), 99
  - anchor element, 97
  - AOL, 9
  - Application Options
    - Configure Editors tab, 51
    - Open With dialog box, 53
    - procedure for selecting a graphics editor, 52
  - Applied Rules section, 194
  - Apply Styles task pane, 19, 117, 153
    - color-coded system of dots, 183
    - renaming styles, 178
    - using to launch the New Style dialog box, 147
  - ASP.NET 2.0
    - adding form validation, 279
    - AssociatedControlID property, 278, 280
    - basic form-to-e-mail script, 284
    - C#, 275
    - choosing a supported programming language, 276
    - creating a form in, 275, 278–279, 281–283
    - creating an .aspx page, 275
    - form controls, 257
    - Master Pages and, 297
    - options for sending form results by e-mail, 284
    - outputting of standard XHTML, 283
    - postback, 284
    - properties available for a Label control, 278
    - setting control attributes using the Tag Properties task pane, 277
    - Standard Toolbox controls, 277
    - styling ASP.NET controls, 286
    - TextMode attribute, 279
    - UseSubmitBehavior property, 281
    - using a separately compiled code-behind page, 284
    - VB.NET (VB), 276, 278
    - Visual JavaScript (VJ#), 276
  - ASPEmail, 275
  - AssociatedControlID property, 278, 280
  - AT&T, 9
  - Attach Dynamic Web Template dialog box, 241
  - author meta-element, 102
  - Auto Style Application setting, 61
  - AutoThumbnail tab, 56
- ## B
- backbone servers, 30
  - Background category, 154
  - background color, 126
  - background properties, 129, 154
  - background-attachment property, 129
  - background-image property, 129, 155
  - background-position property, 130, 155
  - background-repeat property, 129, 155
  - Behaviors task pane, 44
  - <blink> element, 150
  - Block category, 151
  - block element
    - Block category, 151
    - definition of, in CSS, 151



- <blockquote> element, 96
  - blogs, 2
  - <body> element, 62, 65, 84, 122, 154, 235
  - bookmark (anchor), creating, 99
  - Bookmark dialog box, 39, 100
  - Bookmark section, 41
  - bookmarks, 41
  - border properties, setting, 158
  - border style, 61
  - border-color property, 159
  - border-style property, 159
  - border-width property, 159
  - box model, 163
    - additive and subtractive models, 163
    - illustration of, 163
  - box properties, 139, 163
  - <br /> element, 97
  - branding a website, 207
  - brochure websites, 3
  - Browsed Pages list, 99
  - browsers
    - box model, 163
    - changing display defaults, 123
    - CSS 2.1 support for page layout, 171
    - default font selection, 72
    - display quirks of, 31
    - Firefox, 32, 221
    - @import statement and older browsers, 119
    - Internet Explorer, 6, 32, 181, 202
    - Internet Explorer 6, 210
    - Internet Explorer 7, 202
    - lack of kerning in, 152
    - making a page appear the same in all browsers, 124
    - Netscape, 33
    - Opera, 32
    - passing conditional comments to Internet Explorer, 202
    - previewing border style in a variety of browsers, 159
    - Safari, 33
    - support for CSS stylesheets, 111
    - translucent PNG images and, 202
    - understanding display defaults, 122
    - use of margin vs. padding, 122
  - BT, 9
  - business websites, uses and objectives, 2–3
  - Byte Order Marks (BOMs)
    - addition of, to the top of each page, 56
    - selecting US/Western European (ISO), 56
- C**
- C#, 275
  - camel case, 31
  - <caption> element, 169
  - Cascading Style Sheets. *See* CSS
  - Cassini web server, ASP.NET 2.0 and, 80
  - Cell Properties dialog box, 94
  - cellspacing attribute, 169
  - CGI Formmail, 272
  - character set (charset), 83, 101
  - Checkbox control, 49
  - Children's Online Privacy Protection Act, 291
  - class
    - applying to an element, 121
    - class attribute, 121
    - defining, 121
    - naming conventions, 121
  - Classic ASP, 80, 273
  - clear property, 140, 189
  - code completion, 58
  - <code> element, 96, 122
  - Code Formatting tab, 57
  - Code Snippets tab
    - Add Code Snippet dialog box, 76
    - Code view and, 75
    - creating a code snippet, 76
    - doctypes and code snippets, 76
    - using code snippets, 41, 77
  - Code view, 20
    - auto indent, 55
    - code completion, 58
    - default font setting, 57
    - selection margin, 55
    - word wrap, 55
  - Code View section, 40
  - color
    - additive color model, 128
    - background, 126
    - differences in monitor calibration, 149
    - hex, 128
    - named, 128
    - Netscape 4.x and, 128
    - RGB, 128
    - text color, 127
    - understanding color syntax, 127
    - using a color picker, 156
    - using the eyedropper to choose a color, 157
    - using transparency for the absence of color, 128
    - web-safe, 128
  - Color Coding tab, 58
  - color scheme
    - analogous, 208
    - choosing, 207
    - complementary, 208
    - information resources on, 208
    - monochromatic, 208
    - primary colors, 208
    - split complementary (triad), 208

- subject matter and, 207
- using a color wheel, 208
- color temperature, CRTs vs. LCDs, 127
- .com TLD extension, 8
- comments
  - leaving HTML comments in code, 50
  - passing conditional comments to Internet Explorer, 202
- commercial web hosting, benefits of, 10
- Common Language Interface (CLI), 11
- Compatibility Checker Report, 49
- compression, lossy and lossless, 210
- CompuServe, 209
- conditional comments, passing to Internet Explorer, 202
- Configure Editors tab, 51
- Conflicts dialog box, 37
- ContentPlaceHolder control, adding to a Master Page, 298
- contextual selector, 137
- copyright
  - copyright meta-element, 102
  - displaying a copyright notice, 290
  - information resources on, 290
  - ownership of, 290
  - registering, 290
  - using the copyright symbol, 290
- Create New Document option, 98
- creating a masthead, 219
- CSS
  - applying the border property to the <body> element, 67
  - attaching a stylesheet to a web page, 112
  - background color, 126
  - background properties, 129
  - background-attachment property, 129
  - background-image property, 129
  - background-position property, 130
  - background-repeat property, 129
  - block element, definition of, 151
  - <body> element, 122
  - border style, 61
  - box model, 163
  - box properties, 139
  - browsers supporting CSS stylesheets, 111
  - changing browser display defaults, 123
  - changing styles for positioning, 68
  - changing the bullet style of unordered lists, 88
  - changing the document flow with CSS, 139
  - changing the number format of ordered lists, 88
  - changing the order of the cascade, 113
  - choosing a CSS schema, 147
  - class attribute, 121
  - clear property, 140, 189
  - <code> element, 122
  - commenting out a portion of a stylesheet, 126
  - common values for the font-family setting, 73
  - comparing absolute and relative positioning, 143
  - contextual selector, 137
  - creating a font family group, 74
  - creating an indented block of text, 96
  - creating effects with overlapping elements, 141
  - creating horizontal rules, 161
  - creating styles, 63
  - CSS 1, 2, and 2.1, 147
  - .css extension, 62, 112
  - CSS units of measurement, table of, 131
  - declaration, 107
  - defining a CSS class, 121
  - defining a CSS ID, 121
  - defining multiple selectors with the same property values, 135
  - defining page elements, 122
  - definition of, 107
  - <div> element, 121
  - document-level styles, 111–112
  - embedded stylesheets, 111, 113
  - external stylesheets, 62, 111
  - float property, 139
  - general syntax, 59
  - grouping background properties together, 130
  - hex color, 128
  - <hr /> element, 161
  - <html> element, 122
  - HTML page design before stylesheets, 109
  - id attribute, 121
  - @import statement, 112, 119
  - importing a stylesheet into a web page, 112
  - inheritance, 119
  - inline styles, 62, 111–112
  - keeping presentation elements in one style block, 70
  - lack of a default size unit in, 132
  - linking a stylesheet to a web page, 113
  - links and underlining, 149
  - margin attribute, 123
  - named colors, 128
  - opening and closing curly brackets, 107
  - padding attribute, 123
  - passing conditional comments to Internet Explorer, 202
  - position property, 140
  - position: absolute, 140

*CSS, continued*

- position: relative, 142
- properties accepting multiple values, 125
- property, 59, 108
- pseudo-classes, 67
- resolving CSS style conflicts, 113
- RGB color, 128
- selectors, 59, 107
- separating content from presentation, 91, 109
- setting properties and values, 122
- <span> element, 121
- specificity, 119
- specifying a length value, 131
- specifying a percentage value, 131
- style blocks, 62, 111
- stylesheets, advantages of, 108–111
- styling multiple selectors, 136
- summarizing the cascade order, 120
- <table> element, 168
- text color, 127
- three components of, 59
- understanding browser display defaults, 122
- understanding color syntax, 127
- understanding the cascade, 113, 115–118
- using <div> elements to create page sections, 121
- using a distinct style for one page section, 120
- using a flow layout, 139
- using a nonbreaking space, 142
- using CSS shorthand, 61
- using stylesheets to keep website branding consistent, 230
- value, 59, 108
- web-safe colors, 128
- white-space: nowrap attribute, 153
- white-space: pre attribute, 153
- writing a custom class for a hyperlink with a pseudo-class, 134
- writing styles in the <head> section of a page, 62
- .css extension, 62, 112
- CSS Properties task pane, 19, 175
  - Applied Rules section, 163, 194
  - two sections of, 162
  - using to write your own CSS, 162
- CSS Reports, 49
- CSS tab, 59
  - Auto Style Application setting, 61
  - using the <body> element as a selector, 67
- CSS Tab Styles, changing the setting of, 63
- curly brackets, opening and closing, 107
- Cynthia Says, 290

**D**

- Data Protection Act (UK), 291
- Database tab, 81
- declaration, 107
- default document name, 29
- Default Fonts tab, 56
- Define in drop-down box, 149
- definition lists, 91
- Design view, 20, 28
  - changing margin and padding in, 165
  - changing the font displayed in, 57
  - inserting a line break using Ctrl+Enter, 97
- digital certificates, 8
- Directive on Data Protection (EC), 291
- Disability Discrimination Act (UK), 288
- display property, 182
- display: inline property, 222
- <div> element, 68, 175
  - definition of, 61
  - dividing a page into sections, 121, 172
- doctitle region, 234, 238–239
- doctype, 20, 33
  - definition of, 83–84
  - HTML 3.2 or earlier, 84
  - HTML 4.01 Transitional, 84
  - XHTML 1.0 Transitional, 84
- document tabs, 20
- Document window, 20
- document-level styles, 111–112
- domain forwarding, 9
- Domain Name System (DNS), 30
- domain names
  - checking the availability of, 6
  - choosing, 6
  - .com TLD extension, 8
  - country codes, 7
  - country-specific domain extensions, 8
  - digital certificates and .pro registration, 8
  - domain forwarding, 9
  - Global Name Registry, 7
  - length limitations of, 6
  - .name TLD extension, 7
  - .pro TLD extension, 8
  - registering, 7
  - registrars, 6, 8
  - Registry Pro, 8
  - restricted and unrestricted, 7
  - second-level domains, 7
  - subdomains, 7
  - third-level domains, 7
  - top-level domains (TLDs), types available, 7
- Dreamweaver Web Templates, 233
- Drop-Down Box Properties, 260
- Dynamic Web Templates (DWTs)
  - adding editable regions, 236, 239
  - advantages of, 233, 255

- applying to a page with content, 247
- applying to an existing page, 241
- Attach Dynamic Web Template dialog box, 241
- attaching to web pages, 241
- <body> element, 235
- changing an attached DWT, 253
- choosing a naming convention for
  - editable regions, 236
- comparison to Master Pages, 297, 312
- creating, 234
- creating a new page from, 243
- creating editable regions in the body
  - section, 238
- as a design-time tool, 234
- detaching a page from, 252
- doctitle region, 234, 238–239
- dragging and dropping on to an existing
  - page, 243
- Dreamweaver Web Templates, 233
- Editable Regions dialog box, 236, 240
- editing, 251
- ensuring consistency between pages, 234
- Expression DWTs as working in
  - Dreamweaver, 234
- <head> element, 234
- headblock region, 240
- making global changes to a website, 234
- marking page areas as editable regions, 233
- <meta> element, 239, 250
- moving content between editable regions, 249
- New Region drop-down menu, 249
- null links, 251
- preparing an existing page for, 245
- preventing editable regions that collapse, 250
- removing editable regions, 237
- republishing changed pages, 234
- retaining page-level styles, 250
- saving templates in a Templates folder, 234
- selecting Manage Editable Regions to add
  - content regions, 236
- server-side scripting and, 242, 248
- <title> element, 238, 250
- updating pages attached to, 251
- uploading not required, 234
- using locked areas, 233

## E

- e-commerce websites, 2
- E-mail Address option, 101
- Edit Browser List option, 32
- Edit Hyperlink dialog box, 241

- Edit menu
  - Bookmark dialog box, 39
  - Bookmark section, 41
  - changing the margin and padding around
    - an HTML element, 43
  - Code View section, 40
  - Hyperlinks section, 41
  - IntelliSense section, 41
  - menu items, 39
  - Quick Tag bar, 44
  - Quick Tag Editor, 39
  - Refresh, 44
  - setting the display mode for the main
    - document window, 42
  - Styles toolbar, 44
  - Tag Management section, 40
  - Visual Aids, options for, 42
- editable regions, 233
- Editable Regions dialog box, 236, 240
- Elementz, 349
- <em> tag, 55
- em, definition of, 72
- embedded stylesheets, 111, 113
- Empty Web Site option, 27
- error message, 404 (file not found), 30–31
- Expression Web
  - Byte Order Marks (BOMs), 56
  - Cassini web server, 80
  - choosing a default installation, 13
  - Code view, 20
  - default character set, 75
  - default installation location, 13
  - Design view, 20, 28
  - disabling right-click functions, 290
  - doctype, 20
  - Document window, 20
  - Dynamic Web Templates (DWTs), 18
  - extending through add-ons, 50, 347
  - FrontPage Server Extensions (FPSE), 12
  - installing, 13
  - installing the ASPNET web server, 15
  - installing the VBScript editor, 15
  - IntelliSense, 11
  - interface features, 16
  - keyboard shortcuts, 350
  - Linux-based vs. Windows-based web
    - servers, 11
  - menu bar, 17
  - minimum screen resolution
    - recommended, 13
  - operating systems supported, 13
  - performing a custom installation, 13
  - setting the default Code view
    - configuration, 40
  - setting the default fonts, 56
  - Split view, 20, 28

- Expression Web, *continued*
  - Status bar, 22
  - synchronizing a website, 36
  - task panes, 18
  - Undo option, 33
  - using a third-party FTP program, 34
  - using an external graphics editor, 51
  - using the built-in FTP client, 34
  - UTF-8 encoding, 56, 75
  - Visual Aids, 22
  - Web Site view, 20
  - Windows Vista, 13
  - Windows XP, Service Pack 2, 13
- external stylesheets, 111
  - attaching using a relative link, 62
  - detaching before removing Unused Styles, 49
  - importing, 63
- F**
- File menu
  - Edit Browser List option, 32
  - menu items, 25
  - New option, 26
  - New Page option, 26
  - New Web Site option, 26
  - Preview in Browser option, 26, 31
  - Publish option, 26, 33
- file names, using lowercase letters and hyphens in, 30
- File Transfer Protocol (FTP), 9, 33
  - Login Credentials dialog box, 35
  - using to publish a website, 35
- File Upload Properties dialog box, 262
- Firefox, 32, 221
- fixed-width layout, 203
- float property, 139
  - effect of the clear property on, 190
  - image alignment and, 212
  - replacing the HTML align attribute, 185
  - using instead of the position: absolute property, 185
- flow layout, definition of, 139
- fluid layout, 203
- Folder List, displaying local site files, 18–19
- Folders item, 78
- <font> element, as deprecated, 85
- Font Families tab, 70
- <font> tag, cleaning up in imported files, 49
- fonts
  - Arial, 73
  - Courier and Courier New, 74
  - creating a font family group, 74
  - default selection for browsers, 72
  - em, definition of, 72
  - font-family definition, 108
  - Georgia, 73
  - guidelines for using, 74
  - handling multiple-word font names, 74
  - Helvetica, 73
  - including a font not installed on your computer, 75
  - including a generic font family in a font value list, 74
  - lack of kerning in browsers, 152
  - listing multiple font choices for visitors, 74
  - monospace and monotype, 72
  - Tahoma, 73
  - three major families of web fonts, 72
  - Times New Roman, 72
  - using serif fonts at small sizes, 72
  - Verdana, 73
- <form> element, 257, 271
- Form Field Properties dialog box, 258, 266
- form handler, definition of, 270
- Form Properties dialog box, 262, 270
- form-processing bots, 271
- Format menu
  - automatic reuse of existing styles, 46
  - Dynamic Web Template option, 46
  - Font drop-down, 70
  - Master Page option, 46
  - menu items, 45
  - Remove Formatting option, 45
- Format toolbar, 68
  - autogenerated styles and autoincrement, 148
  - creating styles, 17, 63, 147
- forms
  - Add Choice dialog box, 260
  - adding hidden field name and value pairs, 262
  - Advanced Button control, 259
  - Advanced Form Properties dialog box, 272
  - ASP.NET 2.0 form controls, 257
  - ASPEmail, 275
  - associating a label with a form field, 259
  - basic form-to-e-mail script using ASP.NET code, 284
  - CGI Formmail, 272
  - checking with a web host regarding e-mail forms, 284
  - Classic ASP page for processing a contact form, 273
  - creating a fieldset, 260
  - creating a simple contact form, 266
  - creating an .aspx page, 275
  - creating an ASP.NET 2.0 form, 275, 278–279, 281–283
  - dragging <form> elements from the Toolbox, 257
  - Drop-Down Box Properties, 260

- File Upload Properties dialog box, 262
  - <form> element, 257, 271
  - form field, 257
  - Form Field Properties dialog box, 258, 266
  - form handler, definition of, 270
  - Form Properties dialog box, 262, 270
  - form-processing bots, 271
  - forms-processing scripts, 273
  - Group Box control, 260
  - Group Box Properties dialog box, 260
  - hosting on a Linux server, 274
  - hosting on a Windows 2000/Windows 2003 server, 273
  - HTML <form> element, 257
  - Input (Button) control, 259, 261
  - Input (Checkbox) control, 261
  - Input (File) control, 262
  - Input (Hidden) control, 262
  - Input (Image) control, 263
  - Input (Password) control, 264
  - Input (Radio) control, 264
  - Input (Reset) control, 264
  - Input (Submit) control, 264
  - Input (Text) control, 264
  - Label control, 265
  - <label> element, 259
  - <legend> element, 260
  - naming convention for form fields, 258
  - Option Button Properties dialog box, 264
  - password text box, 264
  - PHP page for processing a contact form, 274
  - PHP Send Mail, 274
  - Picture Properties dialog box, 263
  - postback, 257
  - processing, 270
  - Programming Language drop-down menu, 276
  - Push Button Properties dialog box, 261
  - required elements, 257
  - reserved words for field names, 258
  - sendfile.php, 274
  - sending form results by e-mail, 271
  - sendmail.asp, 273
  - sendmail.php, 274
  - styling ASP.NET controls, 286
  - submit button, 257
  - Tag Properties dialog box, 286
  - Text Area control, 265
  - TextArea Box Properties dialog box, 268
  - Toolbox, Form Controls section, 257
  - using ASP.NET 2.0 to add form validation, 279
  - using FPSE to process a web form, 270, 272
  - Windows server support for CDONTs, 273
  - FrontPage, importing content from, 49
  - FrontPage Server Extensions (FPSE), 12, 33
    - processing a web form with, 270, 272
    - publishing using HTTP, 36
    - remembering the user ID/password when publishing a site, 35
  - Remote Web site location field, 35
  - using to publish a website, 35
- G**
- gamma of monitors, 127
  - gateway computers, 30
  - General tab, 54, 79
  - General Tools section, 48
  - GeoCities, 9
  - GIF (Graphics Interchange Format), 209
  - Global Name Registry, 7
  - Google, 102
    - AdWords, 234
    - Checkout, 2
    - Sitemaps, 347
  - Group Box Properties dialog box, 260
- H**
- <h1> tag, 85
  - hand cursor, 201
  - <head> element, 66, 84, 112, 234
  - headblock region, 240
  - header markup, 85
  - hex color, 128
  - HIPPA, 291
  - horizontal rules, creating, 161
  - hover state, 132
  - <hr /> element, 161
  - href attribute, 97
  - HTML
    - <address> element, 96
    - align property, 139
    - alternate language page, 105
    - anchor (bookmark), 99
    - anchor element, 97
    - attaching a stylesheet to a web page, 112
    - automatic highlighting of invalid or incompatible HTML, 55
    - background color, 126
    - background properties, 129
    - background-attachment property, 129
    - background-image property, 129
    - background-position property, 130
    - background-repeat property, 129
    - <blink> element, 150
    - <blockquote> element, 96
    - <body> element, 62, 84, 122
    - box properties, 139
    - <br /> element, 97
    - browsers supporting CSS stylesheets, 111

HTML, *continued*

- <caption> element, 169
- cell padding and cell spacing, 168
- cellspacing attribute, 169
- changing browser display defaults, 123
- changing the document flow with CSS, 139
- changing the margin and padding around an element, 43
- character set (charset), 83, 101
- class attribute, 121
- clear property, 140, 189
- <code> element, 96, 122
- commenting out a portion of a stylesheet, 126
- comparing absolute and relative positioning, 143
- contextual selector, 137
- creating a list, 89
- creating an indented block of text, 96
- creating effects with overlapping elements, 141
- creating headers for a website, 86
- creating hyperlinks, 97
- creating ordered, structured pages, 83
- CSS 1, 2, and 2.1, 147
- CSS properties accepting multiple values, 125
- CSS styles and the <head> section of a page, 62
- CSS units of measurement, table of, 131
- declaration, 107
- defining a CSS class, 121
- defining a CSS ID, 121
- defining multiple selectors with the same property values, 135
- defining page elements, 122
- definition lists, 91
- <div> element, 121
- document-level styles, 111–112
- embedded stylesheets, 111, 113
- external stylesheets, 111
- float property, 139
- <font> element, as deprecated, 85
- <form> element, 257
- grouping background properties together, 130
- <h1> tag, 85
- <head> element, 84, 112
- header markup, 85
- hex color, 128
- href attribute, 97
- <html> element, 83–84, 122
- hyperlinks, 97
- id attribute, 121
- <image> element, Mosaic's introduction of, 208
- @import statement, 112, 119
- importing a stylesheet into a web page, 112
- inheritance, 119
- inline styles, 111–112
- <label> element, 259
- language, 102
- <legend> element, 260
- <link> element, 105
- linking a stylesheet to a web page, 113
- lists, types of, 88
- making relevant headers, 86
- margin attribute, 123
- meta-elements, 101
- named colors, 128
- Netscape 4.x, 113
- <noscript> element, 105–106
- opening and closing curly brackets, 107
- Optimize HTML dialog box, 49
- ordered lists, 88
- <p> element, 84
- padding attribute, 123
- page design before stylesheets, 109
- position property, 140
- position: absolute, 140
- position: relative, 142
- <pre> element, 96
- property, 108
- reserved words for form field names, 258
- resolving CSS style conflicts, 113
- RGB color, 128
- <script> element, 105
- search engines and properly structured sites, 86
- selector, 107
- setting properties and values, 122
- <span> element, 121
- specificity, 119
- specifying a length value, 131
- specifying a percentage value, 131
- style blocks, 111–112
- <style> element, 105, 111–112
- stylesheets, advantages of, 108–111
- styling multiple selectors, 136
- tables, 91
- text color, 127
- <title> element, 78, 99, 101
- <ul> element, 196
- understanding browser display defaults, 122
- understanding color syntax, 127
- understanding how to use structural markup, 86
- unordered lists, 88
- using <div> elements to create page sections, 121

- using a distinct style for one page section, 120
- using a flow layout, 139
- using a nonbreaking space, 142
- using an e-mail hyperlink, 101
- value, 108
- web-safe colors, 128
- whitespace, removing in code, 50
- http-equiv browser instructions
  - character set (charset), 101
  - language, 102
- Hyperlink Properties dialog box, 224
- Hyperlink reports, 293
- Hyperlink view, 294
- hyperlinks
  - adding an underline to a moused-over link, 133
  - anchor element, 97
  - changing a hyperlink from inline to block, 199
  - creating, 97
  - creating a hyperlink to a new page, 224
  - distinguishing a link from ordinary text, 132
  - four pseudo-classes for indicating link state, 132
  - href attribute, 97
  - Hyperlink Properties dialog box, 224
  - Insert Hyperlink dialog box, 98
  - showing a hand cursor for a mouseover action, 201
  - types of, 97
  - writing a custom class for a hyperlink with a pseudo-class, 134
- Hyperlinks item, 79
- Hyperlinks section, 41
- I**
- ID
  - applying to an element, 121
  - defining, 121
  - id attribute, 121
  - naming conventions, 121
- <image> element, Mosaic's introduction of, 208
- images
  - Accessibility Properties dialog box, 211
  - alpha transparency, 210
  - alternative text, 210–211
  - browser support for translucent PNG images, 202
  - clip art, disadvantages of, 209
  - copyright considerations, 209
  - creating a masthead, 219
  - float property and image alignment, 212
  - GIF (Graphics Interchange Format), 209
  - height and width, 210
  - index transparency, 209
  - investing in a graphics editor, 208
  - JPG/JPEG (Joint Photographic Experts), 209
  - location, 210
  - lossy and lossless compression, 210
  - Netscape 4, 210
  - overcompression and artifacts, 210
  - photos, tips for using, 209
  - PNG (Portable Network Graphics), 161, 210
  - recommended image formats for websites, 209
  - relating images to a site's content and goals, 208
  - requirements for inserting on web pages, 210
  - stock photos, 209
  - translucent effects, 210
  - using an empty alt attribute, 223
  - using original graphics, 209
  - Web Image Formats filter, 213
- iMail, 11
- @import statement, 112, 119
- index transparency, 209
- index.html, 29
- information websites, 2
- inheritance, 119
- inline styles, 62, 111–112
  - effects of using, 65
  - using sparingly, 118
- Input (Button) control, 259, 261
- Input (Checkbox) control, 261
- Input (File) control, 262
- Input (Hidden) control, 262
- Input (Image) control, 263
- Input (Password) control, 264
- Input (Radio) control, 264
- Input (Reset) control, 264
- Input (Submit) control, 264
- Input (Text) control, 264
- Insert Hyperlink dialog box, 98, 196
- Insert menu, items in, 44
- Insert Table dialog box, 167
- Insert Table menu, 167
- Instantfx.net, 349
- IntelliSense, 11, 41
- IntelliSense tab, support for ASP.NET 2.0, 58
- Internet Explorer, 32
  - display bug, 181
  - length limitations on domain names, 6
  - passing conditional comments to, 202
  - using a different background from other web browsers, 202
- Internet Explorer 6, 210



- Internet Explorer 7
  - fixes for CSS rendering bugs, 202
  - support for PNG image format, 202
- Internet Protocol (IP) address, 6
- Internet Service Provider (ISP), website hosting, 9
- J**
- JavaScript, using for client-side scripts, 106
- JPG/JPEG (Joint Photographic Experts), 209
- Juicy Studio, 127
- K**
- keyboard shortcuts
  - Code view shortcuts, table of, 352
  - format shortcuts, table of, 352
  - interface and new page management shortcuts, table of, 351
  - standard Windows shortcuts, table of, 350
  - table shortcuts, 353
- Krug, Steve, 292
- L**
- Label control, 265
- <label> element, 259
- language, http-equiv browser instructions, 102
- Language tab, setting to US/Western European (ISO), 81
- Layout category
  - clear property, 185
  - clip property, 185
  - cursor property, 185
  - differences between hidden and collapse, 184
  - display property, 184
  - float property, 185
  - overflow property, 185
  - providing scroll bars, 185
  - visibility property, 184
- Layout Tables task pane, 169
- legal issues
  - accessibility checker in Expression Web, 288
  - accessibility laws applying to websites, 287–288
  - Americans with Disabilities Act (ADA), 288
  - Children's Online Privacy Protection Act, 291
  - copyright laws, 287, 290
  - Cynthia Says, 290
  - Data Protection Act (UK), 291
  - Directive on Data Protection (EC), 291
  - Disability Discrimination Act (UK), 288
  - disabling right-click functions, 290
  - HIPPA, 291
  - human- and machine-readable privacy policies, 291
  - licensing requirements, 287, 292
  - P3P policy, 291
  - Personal Information Protection and Electronic Documents Act (Canada), 291
  - privacy policies, 287, 291
  - Rehabilitation Act, Sections 508 and 504, 288
  - state requirements for accessibility, 288
  - W3C Web Content Accessibility Guidelines (WCAG), 288
- <legend> element, 260
- letter-space, 153
- licensing, 287, 292
- <link> element, types of link relationships, 105
- link state, 132
- Linux (Unix) servers
  - case sensitivity of, 30
  - encoding a space as %20, 30
- List category, 192
- lists
  - changing a bullet style using CSS, 88
  - changing a number format using CSS, 88
  - creating, 89
  - creating a list as a menu using contextual selectors, 192
  - definition of, 91
  - ordered, 88
  - term and definition parts, 91
  - types of, 88
  - unordered, 88
  - using for site navigation, 192
- local website
  - changing the folder location of, 27
  - choosing a screen resolution for previewing, 32
  - choosing between .htm and .html extensions, 30
  - creating, 25–27
  - creating a new web page, 28
  - default document name, 29
  - index.html, 29
  - managing relative file paths, 26
  - necessity for, 26
  - options for publishing a site, 34
  - Page Properties dialog box, 28
  - procedure for publishing, 37
  - synchronizing a website, 36
  - testing in a real web browser, 31
  - transferring local web pages to a production server, 34
  - using F12 to preview, 33
  - using meaningful file and folder names, 30
- Lorem Ipsum text, obtaining online, 217

**M**

Macintosh, Safari browser, 33

Manage Content Regions dialog box, 302, 311

Manage Editable Regions, 236

Manage Microsoft ASP.NET Content Regions, 301, 309

Manage Styles task pane, 19, 158, 230
 

- color-coded system of dots, 183
- renaming styles, 178
- using to launch the New Style dialog box, 147

margin, changing in Design view, 165

margin attribute, 123

Margins and Padding Visual Aids, enabling, 165

Master Pages
 

- adding, deleting, and renaming
  - ContentPlaceHolders, 298, 302
- adding, removing, and modifying controls, 299
- basing content delivery on the user's login status, 297
- changing the default page title, 299
- comparison to DWTs, 297, 312
- creating a nested Master Page, 308–311
- creating a new Master Page, 298
- creating content pages using a Master Page, 305–306, 308
- creating from an existing HTML page, 299–300, 302–305
- having parent and child masters, 297, 308
- keeping .master as the file extension, 298
- Manage Content Regions dialog box, 302, 311
- managing server control references and URLs, 297
- Master Page option, 46
- placing the primary site stylesheet, 304
- selecting Manage Microsoft ASP.NET Content Regions, 301, 309
- selecting the Create from Master Page menu option, 305
- selecting the page language, 305
- updating the primary and secondary masters, 312
- using View Source in your browser, 308
- web server support for ASP.NET 2.0 required, 297

menu bar, 17

menus, 207
 

- adding mouseover behavior, 223
- turning an unordered list into a horizontal menu, 222

<meta> element, 239, 250

<meta> tag, 77

meta-elements
 

- adding with the Page Properties dialog box, 102
- author, 102
- copyright, 102
- description, 102
- http-equiv browser instructions, 101
- keywords, 102
- robot, 102

Microsoft
 

- Access, 12
- Excel, 93
- Office 2007, 13
- Paint, 51
- Script Editor, 50
- SQL Server, 12
- Windows Vista, 13
- Windows XP, Service Pack 2, 13
- Word, 45

Modify Style dialog box, 154, 200
 

- border-color property, 159
- border-style property, 159
- border-width property, 159
- Box category, 163
- Layout category, 184
- Position category, 174
- setting border properties, 158
- setting box properties, 163

Modify Styles task pane, 153

Mono Project, website of, 11

Mosaic, 208

MSN Live Search, 102

mystery-meat navigation, 207

**N**

.name TLD extension, 7

named colors, 128

naming conventions
 

- camel case, 31
- file and folder names, 31
- naming style sheets, 31

Neilson, Jacob, 292

Netscape 4.x, 113, 128, 210

New option, 26

New Page option, 26

New Region drop-down menu, 249

New Style dialog box, 179, 196, 201
 

- Background category, 154
- background-image, 155
- background-position, 155
- background-repeat, 155
- Block category, 151
- Box category, 163
- color drop-down list, 149
- Define in drop-down box, 149
- Description section, 150

- New Style dialog box, *continued*
  - Font category, 148
  - font-family drop-down list, 149
  - font-variant drop-down list, 149
  - inline elements, 152–153
  - launching, 148
  - Layout category, 184
  - letter-space, 153
  - More Colors option, 156
  - Preview section, 150, 156
  - selecting a font category, 150
  - Selector box, 148
  - Selector drop-down list, 156, 168
  - setting background properties, 154
  - setting box properties, 163
  - Table category, 168
  - text-align, 152
  - text-indent, 153
  - text-transform drop-down list, 149
  - vertical-align, 152
  - white-space, 153
  - word-space, 153
- New Table dialog box, available style options, 168
- New Web Site option, 26
- no-right-click scripts, 290
- nonbreaking space, 142, 169, 250
- <noscript> element
  - offering alternative navigation with, 106
  - using meaningfully, 106
- null links, 251
- O**
- Open With dialog box, 53
- Opera, 32
- Optimize HTML dialog box
  - options not recommended for use, 50
  - Remove Comments section, 50
  - Remove Whitespace section, 50
  - using, 49
- Option Button Properties dialog box, 264
- Orange, 9
- ordered lists, 88
- Outlook, 11
- P**
- <p> element, 84
- P3P policy, 291
- padding, 43
  - changing in Design view, 165
  - padding attribute, 123
- Page Editor Options, 40, 74, 120, 214
  - AutoThumbnail tab, 56
  - Code Formatting tab, 57
  - Color Coding tab, 58
  - CSS tab, 59
  - Default Fonts tab, 56
  - dialog box, 147
  - document-level styles, 111
  - Font Families tab, 70
  - General tab, 54
  - IntelliSense tab, 58
  - Picture tab, 56
  - Ruler and Grid tab, 56
- page layout
  - adding a two-column layout, code example, 226
  - creating a centered, fixed-width layout, 204
  - creating a hyperlink to a new page, 224
  - creating a masthead, 219
  - creating a two-column layout using absolute positioning, 174
  - CSS 2.1 support for, in current browsers, 171
  - establishing a distinctive look and feel, 217
  - fixed-width layout, definition of, 203
  - fluid layout, definition of, 203
  - layout problems caused by absolute positioning, 183
  - positioning copyright information, 189
  - restricting the width of a page, 204
  - starting with the basic page-level defaults, 218
  - turning an unordered list into a horizontal menu, 222
  - two common types of, 171
  - using <div> elements to divide a page into sections, 172
  - using stylesheets to keep website branding consistent, 230
- Page Properties dialog box, 28, 68, 239, 299
  - Custom tab, 102
  - General tab, 102–103
- Paint.NET, downloading, 51
- Paragraph dialog box, 68
- password text box, 264
- PayPal buttons, adding, 347
- PDF files, 97
- Personal Information Protection and Electronic Documents Act (Canada), 291
- personal websites, uses and objectives, 2
- PHP, 80
- PHP Send Mail, 274
- Picture dialog box, 213
- Picture File Types dialog box, 56
- Picture Properties dialog box, 263
- Picture tab, 56
- Pictures toolbar, 212
- placeholder text, 217
- PNG (Portable Network Graphics), 161, 202, 210

POP3 mail services, 11

Position category

- absolute option, 174
- creating a two-column layout using absolute positioning, 174
- fixed option, 174
- relative option, 174

position property, 140

position: absolute, 140

position: relative, 142

postback, 257, 284

<pre> element, 96

Preferences section, 51

Preview in Browser option, 26, 31

Preview Tab, 80

privacy policies, 287

- advisability of having, 291
- Children's Online Privacy Protection Act, 291
- collecting anonymous information about site visitors, 291
- Data Protection Act (UK), 291
- Directive on Data Protection (EC), 291
- HIPPA, 291
- human- and machine-readable versions, 291
- P3P policy, 291
- Personal Information Protection and Electronic Documents Act (Canada), 291
- specifying the data encryption type used, 291
- types of, 291

.pro TLD extension, 8

Program Management section, 50

Programming Language drop-down menu, 276, 298

Properties Summary tab, 79

property, 59, 108

pseudo-classes

- active state, 132
- adding an underline to a moused-over link, 133
- hover state, 132
- inheritance from the <a> element, 132
- link state, 132
- listed order of, 67, 132
- visited state, 132

Publish option

- File Transfer Protocol (FTP), 33
- FrontPage Server Extensions (FPSE), 33
- Remote Web Site Properties dialog box, 34
- synchronizing a website, 36
- web host's preinstalled files/folders, 36

Push Button Properties dialog box, 261

**Q**

Quick Link bar, 65

Quick Tag bar, 20, 44, 68, 87, 119, 175, 247

Quick Tag Editor, 39, 266–267

**R**

Recalculate Hyperlinks item, 79

Reformat HTML option, restoring text indenting, 50

Refresh, 44

registrars, 6, 8

Registry Pro, 8

Rehabilitation Act, layman's guide to, 288

Remote Web Site item, 79

Remote Web Site Properties dialog box, 34

Remove Formatting option, 45

Remove Generated HTML section, 49

Remove Unused Content section, 49

Reports item, 79

Reports section, 48

RGB color, 128

Road Runner, 9

robot meta-element, 102

Ruler and Grid tab, 56

**S**

Safari, 33

screen readers, 211

<script> element, 105

scripting folders, 38

scroll bars, providing, 185

search engine optimization (SEO), 102–103

Search Engine Watch, 102

search engines

- description meta-element, 102
- Google, 102
- ISP-provided sites and, 9
- keywords meta-element, 102
- MSN Live Search, 102
- page description and, 29
- properly structured sites and, 86
- search engine optimization (SEO), 102–103
- Search Engine Watch, 102
- Yahoo!, 102

second-level domains, 7

Section 508 accessibility, 48

Secure Socket Layer (SSL), 10

selectors, 107

- class, 60
- HTML element, 60
- ID, 60

sendfile.php, 274

sendmail.asp, 273

sendmail.php, 274

- server-side scripting, 9
  - Set Language option, 48
  - site map, 4, 106
  - Site menu
    - Advanced tab, 81
    - Database tab, 81
    - Folders item, 78
    - General tab, 79
    - Hyperlinks item, 79
    - Language tab, 81
    - links and disabling metatables, 79
    - Preview Tab, 80
    - Properties Summary tab, 79
    - Recalculate Hyperlinks item, 79
    - Remote Web Site item, 79
    - Reports item, 79
    - Site Settings item, 79
    - Web Site tab, 78
  - site navigation, 207
  - Site Settings item, 79
  - Site Settings Language tab, 55
  - Site Summary reports, 295
  - SMTP mail services, 11
  - <span> element, 121
    - definition of, 61
  - specificity, 119
  - spell-checker, 48
  - spelling options, 55
  - Split view, 20, 28
  - Spool, Jared, 292
  - SQL Server, 12
  - Status bar, 22
  - <strong> tag, 55
  - structural.html, downloading, 147
  - style block, 62, 112
  - <style> element, 105, 111–112
  - styles, creating, 63
  - Styles toolbar, 44
    - creating new styles with, 147
  - stylesheets
    - advantages of, 108–111
    - attaching to web pages, 112
    - .css extension, 112
    - embedded, 111, 113
    - importing into a web page, 112
    - linking to a web page, 113
  - subdomains, 7, 9
  - submit button, 257
- T**
- <table> element, 168
  - Table Properties dialog box, 168
  - tables
    - adding a nonbreaking space to table cells, 169
    - adding comment tags, 169
    - <caption> element, 169
    - captions, 91
    - Cell Properties dialog box, 94
    - changing the vertical alignment in table cells, 169
    - column and row headers, 91
    - creating, 92, 167
    - designers' abuses of, 91, 110
    - Insert Table menu, 167
    - Layout Tables task pane, 169
    - not using tables for page layout, 170
    - <table> element, 168
    - Table Properties dialog box, available style options, 168
    - turning a data cell into a header cell, 94
    - using for data presentation, 91
  - Tag Management section, 40
  - Tag Properties dialog box, 286
  - Tag Properties task pane, 19, 162, 266, 277
  - task panes
    - Apply Styles, 19
    - CSS Properties, 19
    - Folder List, 19
    - Manage Styles, 19
    - Tag Properties, 19
    - Toolbox, 19
  - templates
    - Dreamweaver Web Templates, 233
    - Dynamic Web Templates (DWTs), 233
    - purpose of, 233
    - saving templates in a Templates folder, 234
    - server-side templates, 233
    - types of, 233
  - Text Area control, 265
  - text color, 127
  - text-align, 152
  - text-indent, 153
  - TextArea Box Properties dialog box, 268
  - TextMode attribute, 279
  - third-level domains, 7
  - title attribute, 149
  - <title> element, 78, 99, 101, 238, 250
  - Toolbox task pane, 19, 44, 257
  - Tools menu
    - Accessibility Report, 48
    - Application Options, 51
    - changing the language of a section of text, 48
    - Checkbox control, 49
    - Compatibility Checker Report, 49
    - CSS Reports, 49
    - General Tools section, 48
    - Optimize HTML dialog box, 49
    - Page Editor Options, 40, 54
    - Preferences section, 51

- Program Management section, 50
- Remove Generated HTML section, 49
- Remove Unused Content section, 49
- Reports section, 48
- running the spell-checker and setting spelling options, 48
- Set Language option, 48
- top-level domains (TLDs), types available, 7
- Tripod, 9

## U

- <ul> element, 196
- Undo option, 33
- unordered lists, 88
- upload managers, 9
- usability
  - creating a clear visual hierarchy, 292
  - guidelines for, 292
  - Hyperlink reports, 293
  - Krug, Steve, 292
  - making links visually distinctive, 292
  - Neilson, Jacob, 292
  - Site Summary reports, 295
  - Spool, Jared, 292
  - testing a website for usability, 293
  - using website conventions, 292
- user variables, definition of, 104
- UseSubmitBehavior property, 281
- UTF-8 encoding, 56, 75
- UTF-16 encoding, 56

## V

- value, 59, 108
- VB.NET (VB), 276, 278
- vertical-align, 152
- View menu, items in, 42
- Virtual PC
  - downloading from Microsoft, 33
  - running with a second operating system, 33
- VisiBone, 127
- visited state, 132
- Visual Aids, 22
  - Margins and Padding Visual Aids, enabling, 165
  - options for, 42
- Visual Basic Editor, 50
- Visual JavaScript (VJ#), 276
- Visual Studio, 284
- Visual Web Developer Express, 284

## W

- W3C validator, 49
- W3C Web Content Accessibility Guidelines (WCAG), 127, 288
- watermarks, 130

- Web Accessibility Initiative (WAI), 48
- web hosting
  - ASP.NET 2.0, 11
  - checking for the supported database and server-side tools, 12
  - commercial web hosting, 10
  - domain forwarding, 9
  - File Transfer Protocol (FTP), 9
  - hosting using a subdomain name, 9
  - ISP hosting, 9
  - Linux-based vs. Windows-based web servers, 11
  - POP3 mail services, 11
  - portals offering free hosting, 9
  - recommended features in a web host, 11
  - search engines and ISP-provided sites, 9
  - Secure Socket Layer (SSL) encryption, 10
  - server-side scripting, 9
  - SMTP mail services, 11
  - upload managers, 9
- Web Image Formats filter, 213
- web pages
  - adding meta-elements with the Page Properties dialog box, 102
  - alternate language page, 105
  - anchor (bookmark), 99
  - attaching stylesheets to, 112
  - backing up before changing, 245
  - <body> element, 84
  - branding a website, 207
  - Browsed Pages list, 99
  - browsing recently viewed web pages, 99
  - changing browser display defaults, 123
  - character set (charset), 83, 101
  - creating a back-to-top bookmark, 99
  - creating a centered, fixed-width layout, 204
  - creating a hyperlink to a new page, 224
  - creating a list, 89
  - creating a two-column layout using absolute positioning, 174
  - creating an indented block of text, 96
  - creating headers for a website, 86
  - creating ordered, structured pages with HTML, 83
  - CSS 2.1 support for page layout in current browsers, 171
  - definition lists, 91
  - doctype declaration, 83–84
  - E-mail Address option, 101
  - ensuring sufficient text contrast, 127
  - <head> element, 84
  - head section, contents of, 83
  - header markup, 85
  - HTML 3.2 or earlier doctype, 84
  - HTML 4.01 Transitional doctype, 84

- web pages, *continued*
    - <html> element, 83–84
    - http-equiv browser instructions, 101
    - hyperlinks, 97
    - image requirements, 210
    - language, 102
    - lists, types of, 88
    - making a page appear the same in all browsers, 124
    - making relevant headers, 86
    - margin attribute, 123
    - menu and site-navigation conventions, 207
    - mystery-meat navigation, 207
    - Netscape 4.x, 113
    - ordered lists, 88
    - padding attribute, 123
    - required elements, 83
    - restricting the width of a page, 204
    - screen readers and alt text in images, 211
    - search engines and properly structured sites, 86
    - site map, 106
    - structuring, 84
    - tables, 91
    - <title> element, 99, 101
    - understanding browser display defaults, 122
    - understanding how to use structural markup, 86
    - unordered lists, 88
    - using <div> elements to create page sections, 121
    - using an e-mail hyperlink, 101
    - using color in, 126
    - using JavaScript for client-side scripts, 106
    - using stylesheets to keep website branding consistent, 230
    - validating, 211
    - watermarks, 130
    - XHTML 1.0 Transitional doctype, 84
  - web servers, Linux-based vs. Windows-based, 11
  - Web Site tab, 78
  - Web Site view, 20
  - WEBASSIST, PayPal buttons, 347
  - WebDAV, as a rarely used option, 35
  - web-safe colors, 128
  - websites
    - blogs, 2
    - brochure sites, 3
    - checking domain name availability, 6
    - choosing a domain name, 6
    - creating a site map, 4
    - determining your site's goals and requirements, 1
    - e-commerce sites, 2
    - information sites, 2
    - objectives for business sites, 2–3
    - objectives for personal sites, 2
    - picturing your ideal target visitors, 3
    - planning your content, 4
    - registrars, 6, 8
    - structuring your site, 4
    - suggestions for improving, 12
    - understanding your target audience, 1
  - white-space: nowrap attribute, browser support for, 153
  - white-space: pre attribute, browser support for, 153
  - Windows Desktop Search, 230
  - Windows Mail, 11
  - Windows servers, case insensitivity of, 30
  - Windows Vista, 13
  - Windows XP, Service Pack 2, 13
  - word-space, 153
  - Wrap Tag, 175
- X**
- XHTML
    - case sensitivity of, 31
    - outputting of, by ASP.NET 2.0, 283
    - XHTML 1.0 Transitional doctype, 33, 84
- Y**
- Yahoo!, 9, 102